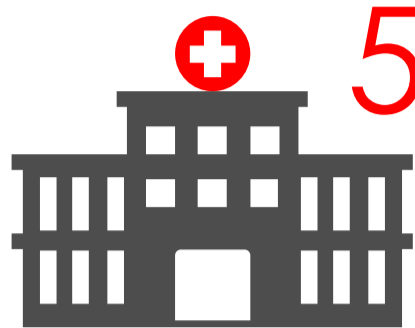


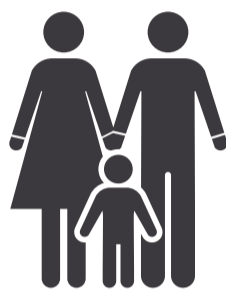
# Road Crash Trauma in the Midland Region 2017



**549** patients were admitted to Midland hospitals due to road traffic crashes in 2017\*

Road traffic crashes are a major cause of trauma admissions to hospitals in the Midland Region and are the most common cause of Major trauma admissions with serious threat to life. In 2017, the Midland Trauma System registry recorded 549 car (and 172 motorcycle) crash casualties who were admitted to Midland Hospitals

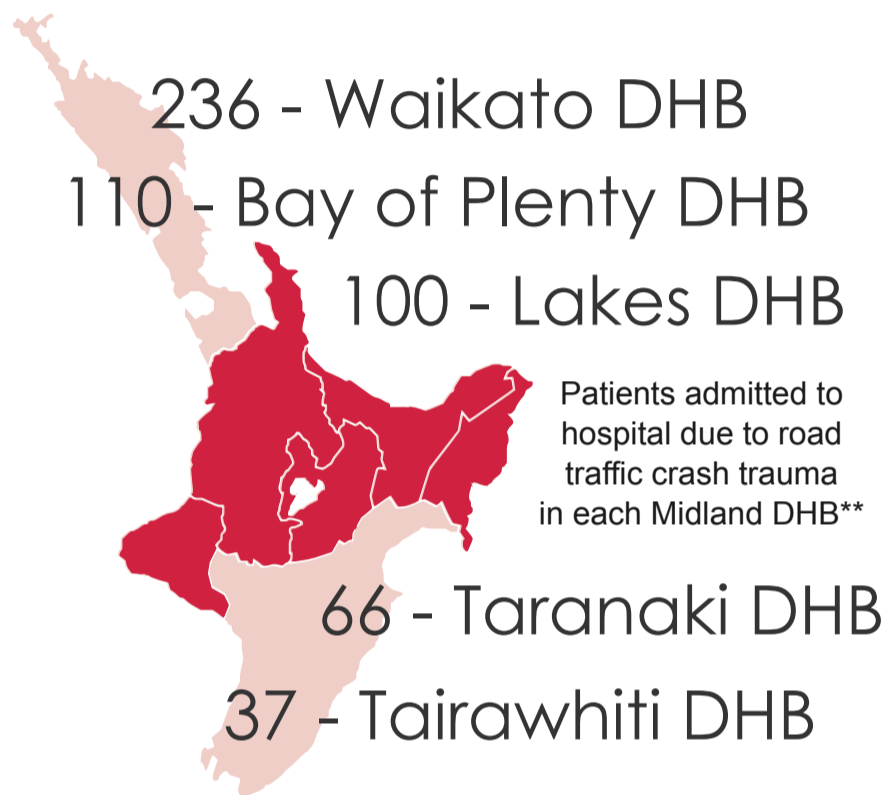
**256** patients were female



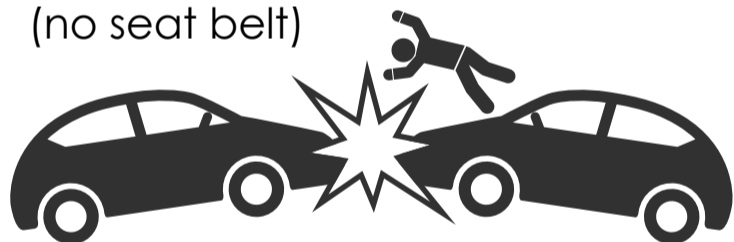
**293** patients were male

**30** patients were children 00-14 Years

**519** patients were adults



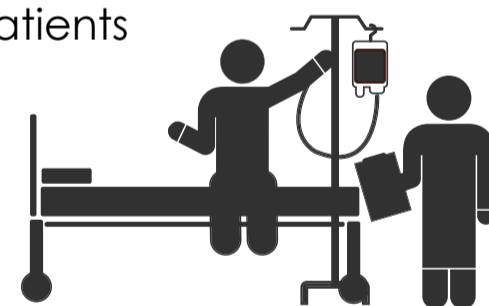
**87** of those involved in car/vehicle crashes were known to be unrestrained (no seat belt)



Wearing seatbelts significantly reduces the risk of serious injury during road traffic crashes. Of the 87 trauma patients who were unrestrained, 35% had Major trauma, compared to 22% for those who were known to be restrained with seat belts

**3,638** total bed days were spent in Waikato Hospitals by traffic crash trauma patients

The average length of stay for road traffic crash trauma patients was 6.6 days



For Major Trauma patients, the average length of stay was 14.2 days

**\$4.96 Million**

The direct cost of road traffic crash trauma to Waikato DHB in 2017 alone

The cost to you and your family could be incalculable.

**Drive safe and seat belt on, always.**

\*Includes Bay of Plenty, Lakes, Tairāwhiti, Taranaki, and Waikato DHBs. Data are for traffic crashes occurring on road (does not include motorcycle crashes, pedestrian or cycling casualties), 2017

\*\*Some patients may be transferred between DHBs, volumes reflect DHB of first admission